

3385 Up Down LED Linear Light

Description:

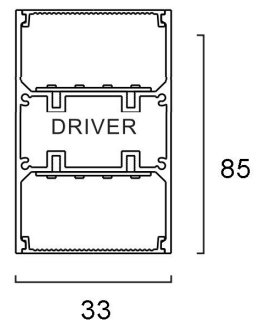
3385 linear led light fixture is slim. It is one of the most popular items used for up and down linear LED lighting. It is very easy suspended and wall mounted without disassembly and reassembly.

This up and down with two LED strip locations, AL.3385 combines up and down lighting to create a decorative wall lighting profile. The power source can be hidden within the profile to create a seamless installation in individual or continuous lines of light. A range of colour temperature LED strips are available or the profile can be used with a preferred LED option.

A compact design with superior thermal management makes this fixture perfect for any truly High-End commercial application.

Application:

- Office Lighting .
- Commercial Lighting .
- Restaurant. Gym
- Showroom 4S Shop



Information:

Features:

- Aluminum 33x85mm Linear profile, good heat radiation with long lifespan;
- Power: 20W/30W/40W/50W/60W/80W/90W/
- Length: /600mm/900mm/1000mm/ 1200mm/1500mm/1500mm/ Customized Length
- Support 0~10v, PWM and Resistor dimming solutions (smart, DALI and Triac are for choice);
- High lighting efficacy, save more energy;
- Linear light fixtures could be linked to very long line but use only one set of AC cables;
- Light source adopts LM-80 certified LED
- Linkable:seamless connection, such as : I / L / V / Y / X style.
- Environmentally-friendly: no mercury
- Medium useful life > 50,000 hours (L80B50) at ambient temperature of 25 °C

Specification:

- Power supply : LIFUD PHILIPS
- Lighting Source: OSRAM /Sanan
- Power factor: >0.93.
- Housing material: aluminum.
- Working environment temperature: -20oc ~ +45oc.
- Lamp Certificates: CE ROHS

ITEM#	Length	Color Temperature	LED type	Wattage	Brightness	CRI	Input Voltage
OP-3385-600CM-20W	600mm	3000K/4000K 6000K/RGB	SMD2835	20W	>80lm/w (OSRAM) >100lm/w (SANAN)	>80	100-277V AC 220-240V AC 50/60Hz
OP-3385-900CM-30W	900mm			30W			
OP-3385-120CM-40W	1200mm			40W			
OP-3385-150CM-50W	1500mm			50W			
OP-3385-180CM-60W	1800mm			60W			
Customized Length....			

Profile Colors

Silver / White / Wooden grain / Black



Cover options

1)Diffuse PC

2)Anti-glare PMMA



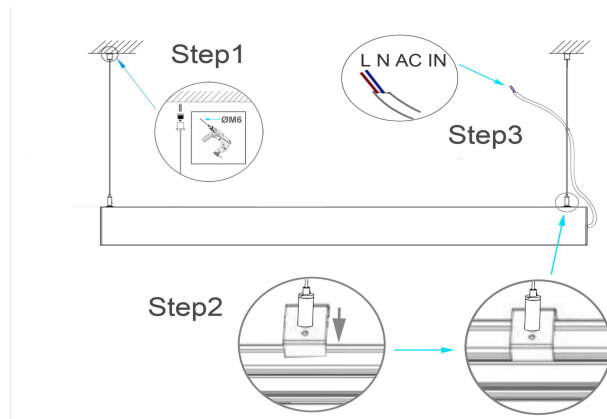
Install :

1. Pendant Mounted

Step 1. Make 2 holes(each hole diameter is 6mm) in corresponding position on the ceiling and push inflated plastic into the hole, then fix the hanging kit end fix to the ceiling.

Step 2. Connect the light body to the hanging kit, and adjust the length of the hanging kit via hanging button.

Step 3. Connect the power to AC wire, installation finish.



2. Wall mounted

Step 1. Fix the screws into the wall according to the holes position at back of lamp body.

Step 2. Hanging the lamp to the wall by fixed screws.

