

LED High Bay Light

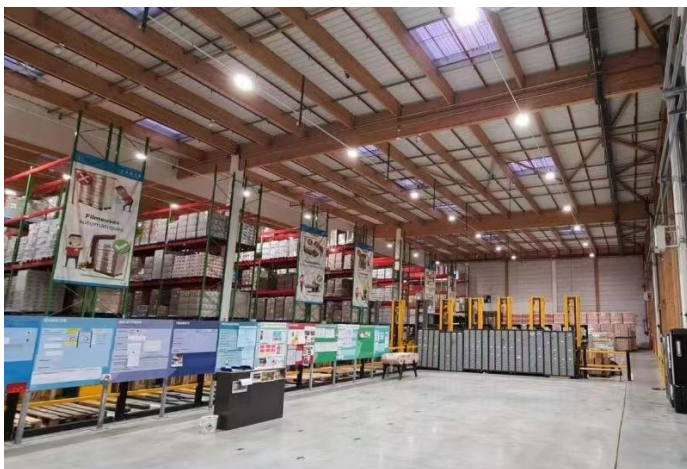
Description:

LED high bay provides a remarkable lighting solution mainly for warehouse, factory, school gymnasium, or any large and cavernous space. In LED high bay industry, offers durable and cost-effective performance.

These lights efficiency reach from 130LM/W to 190LM/W are available. And they are compatible with an intelligent control system which ensures a longer lifespan and lowers 90% cost. Moreover, professional optical lenses and various installation accessories which meet all your requirements for any project. It is Ideal for for your planned retrofit or new constructing,Creating tremendous energy saving at a extremely affordable price

Application:

- Warehouse
- Supermarket
- Gas station Toll station
- Shop



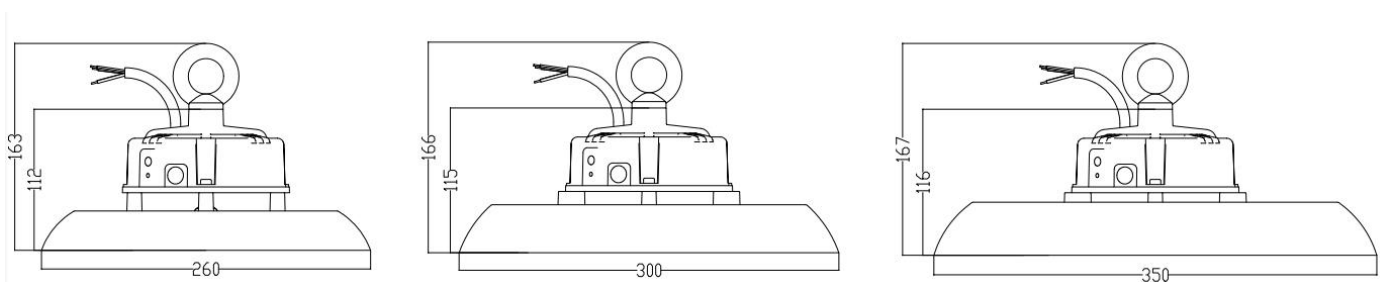
Information:

Features:

- High efficiency, 170-190lm/w CRI >70(80Ra optional)
- Integrated die-casting AL housing, compact and elegant appearance. excellent anti-corrosion property.
- IP65 waterproof ,dust-proof ,explosion-proof and anti-corrosion
- IP Rating IP65 IK Rating IK09
- Surge Protection 4KV line-line, 4KV line-earth
- Long Lifespan Long life span , L70 > 50,000 Hours
- Anti-Glare Alum Reflector available , Reduce glare to UGR <22
- Build-in Sensor Available ,Get more energy saving with a smart build-in Microwave sensor.
- Control : No/OFF /1-10V Dimmable, Daylight Sensor, Microwave Sensor
- Professional UGR lens: 60° /90° /120° available.

Model No.	Input voltage(V)	Power (w)	Power Supply	LED Chip	Lumen (lm) (±5%)	CCT (K)	Weight NW
OP-HB100W	AC100V-277V 50/60HZ	100W	SOSEN PHILIPS	Epistar 2835	170Lm/W 190LM/W	3000K4000K/ 5000K/5700K	1.8KG
OP-HB150W	AC100V-277V 50/60HZ	150W	SOSEN PHILIPS	Epistar 2835	170Lm/W 190LM/W	2700K 3000K 4000K 5000K	2.2KG
OP-HB200W	AC100V-277V 50/60HZ	200W	SOSEN PHILIPS	Epistar 2835	170Lm/W 190LM/W	2700K 3000K 4000K 5000K	2.8KG

Drawing :



Distribution Curve:



60°



90°



120°

More Pictures:



Build-in Sensor



Adjustable Bracket



Aluminum Reflector

