

## LED Track Light Fish

### Description:

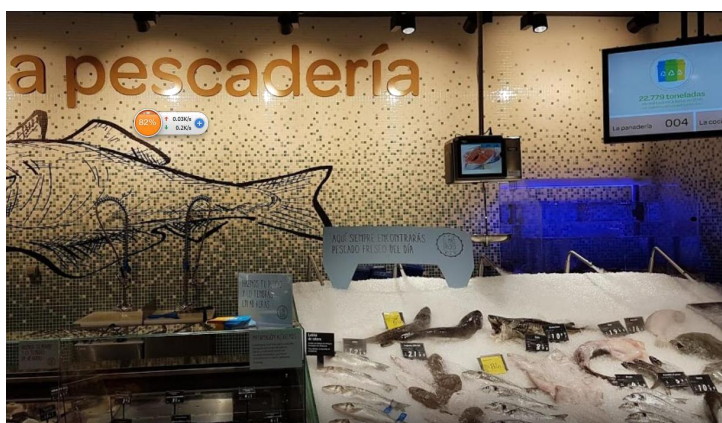
Such products are displayed in special cabinets that are maintained at low temperatures. It is therefore beneficial to use cool white light of the FISH module to support the perception of freshness, this is the case for frozen items, fresh fish and dairy, the perceived low temperature promotes a sense of freshness, assuring customer that the product displayed are of the highest quality, it is vital to use light with excellent color rendition of  $CRI \geq 90$  in order that goods are truthfully and temptingly presented

The economic and elegant design of this luminaire was developed for very specific food lighting applications. Food products are displayed in the best light possible with this fully adjustable product with three different beam angles, exceptional reflector and efficiency of up to 94%.



### Application:

Application : Fish ,Frozen product and Dairy

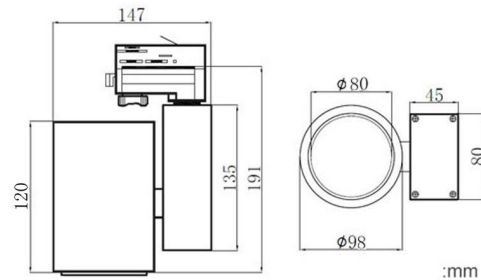


## Features:

- The cool white shades of CCT add a freshness look
- Minimize food discoloration and create attractive
- No polluting or toxic element such as mercury, lead, does not emit UV rays
- Forged heatsink improves its performance by 60% compared to AL die-cast and extrusion technologies
- Reduce heat from lighting fixtures especially in areas with perishable products
- Cover a wider colour spectrum than traditional fluorescents lamps
- Flexible beam direction adjustable: 355° horizontally and 90° vertically.
- Medium useful life > 50,000 hours (L80B50) at ambient temperature of 25 °C

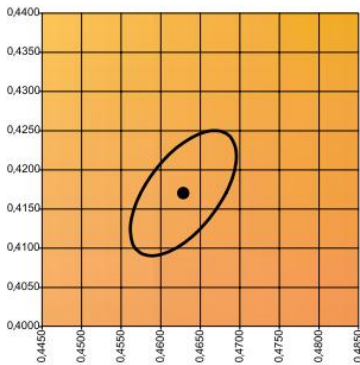
## Technical:

- Power supply :Italy Brand Archi
- Track adapter: 2 wires 3 wires 4 wires 6 Wires
- Housing material: aluminum.
- Housing color: White, Black
- Dimmable : No/OFF / Triac Dim/ 0-10V Dim/ DALI Dim
- Working environment temperature: -20oc ~ +45oc.
- Lamp Certificates: CE ROHS SAA
- Driver Certificates : TUV CB UL CE ROHS SAA

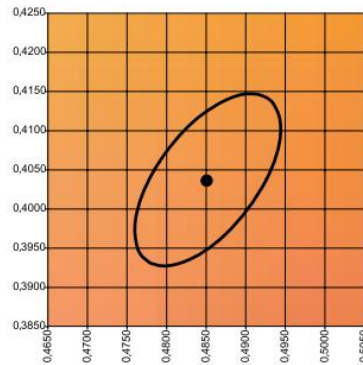


Model No.	Input voltage(V)	Power (w)	LED Chip	Lumen (lm) (±5%)	CCT	Beam angle(o)	Application	Color
OP-TLE35W FI	AC220-240V AC110-277V	35W	Bridgelux	3500LM	6500K	24, 38,60	Fish	WH/BK

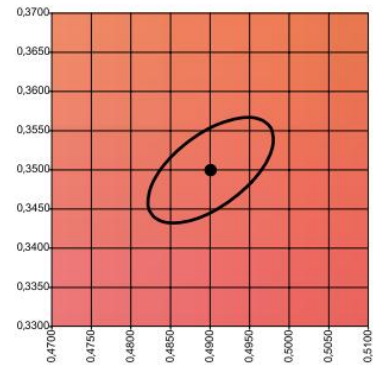
## Colour stability:



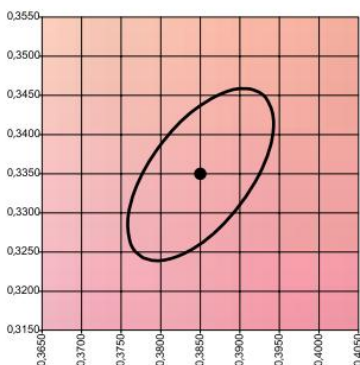
**GOLD** MacAdam ellipse: 3SDCM



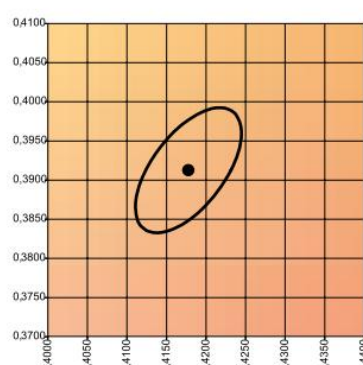
**GOLD+** MacAdam ellipse: 4SDCM



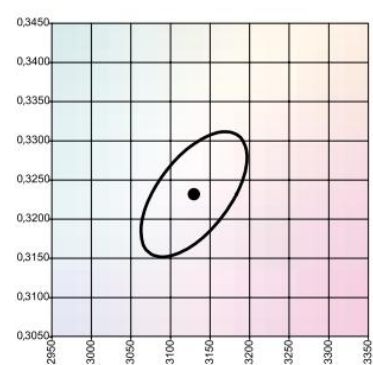
**MEAT+** MacAdam ellipse: 3SDCM



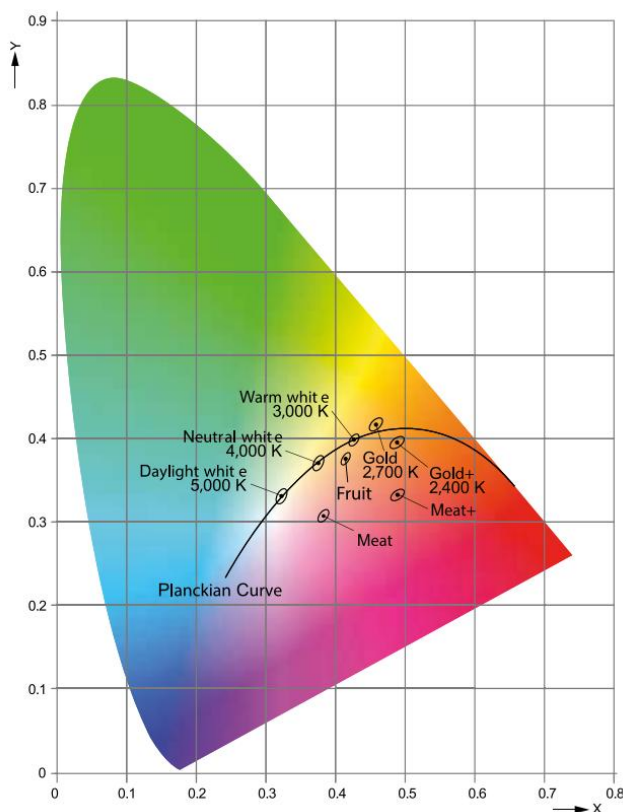
**MEAT** MacAdam ellipse: 4SDCM



**FRUIT** MacAdam ellipse: 3SDCM



**FISH** MacAdam ellipse: 3SDCM



**Special Spectrum for different kinds of foods ,it is provided by quality module 3-4 SDCM, which means the light colour will not change over the LED operation.**