

LED Track Light Meat

Description:

The “Meat Light” modules offer a color spectrum that enhances the red of the meat. A striking contrast is created between the range of red colors, which visually guarantees a fresher and more attractive appearance of the meat without affecting the rest of the colors that surround it. It accentuate the red and pink color of the food but always respecting the whites of the meat, such as pork, poultry and sausages, the product will be much fresher and more appetizing to the eye without having to color distortion.

The economic and elegant design of this luminaire was developed for very specific food lighting applications. Food products are displayed in the best light possible with this fully adjustable product with three different beam angles, exceptional reflector and efficiency of up to 94%.



Application:

Application : Butcher Meat , Cold Meat Sausage & Poultry

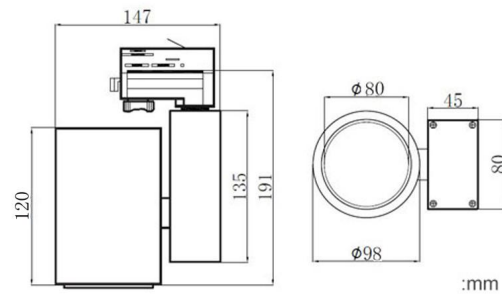


Features:

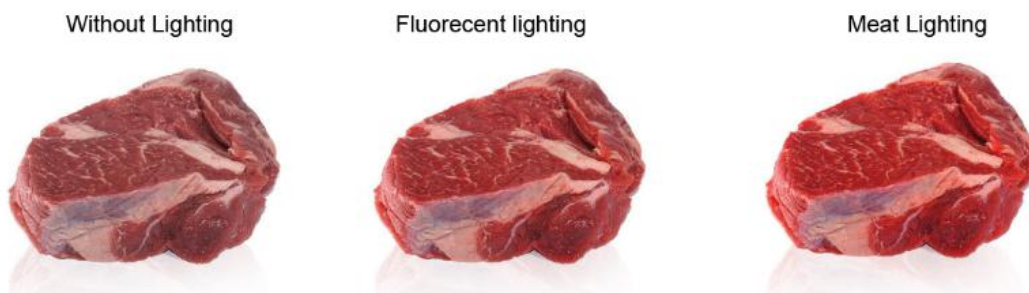
- Displayed meat products look fresh and juicy while white elements retain their naturally white colour
- Minimize meat discoloration and create attractive and tempting meat display cases.
- No polluting or toxic element such as mercury, lead, does not emit UV rays
- Forged heatsink improves its performance by 60% compared to AL die-cast and extrusion technologies
- Reduce heat from lighting fixtures especially in areas with perishable products
- Cover a wider colour spectrum than traditional fluorescents lamps
- Flexible beam direction adjustable: 355° horizontally and 90° vertically.
- Medium useful life > 50,000 hours (L80B50) at ambient temperature of 25 °C

Technical:

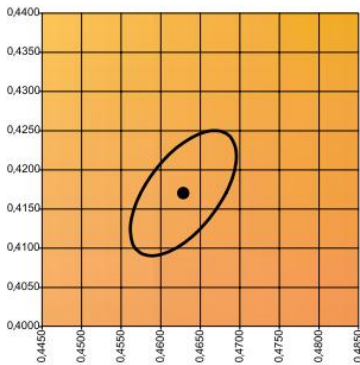
- Power supply :Italy Brand Archi Philips Lifud
- Track adapter: 2 wires 3 wires 4 wires 6 Wires
- Housing material: aluminum.
- Housing color: White, Black
- Dimmable : No/OFF / Triac Dim/ 0-10V Dim/ DALI Dim
- Working environment temperature: -20oc ~ +45oc.
- Lamp Certificates: CE ROSH SAA
- Driver Certificates : TUV CB UL CE ROSH SAA



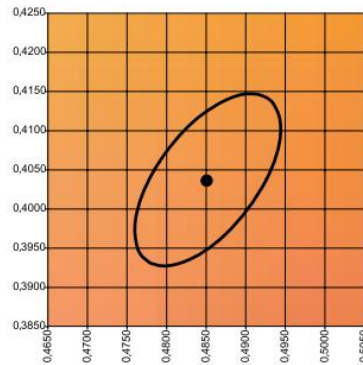
Model No.	Input voltage(V)	Power (w)	LED Chip	Lumen (lm) (±5%)	CCT	Beam angle(o)	Application	Color
OP-TLE35W ME	AC220-240V AC110-277V	35W	Bridgelux	2450LM	Meat	24, 38,60	Pork	WH/BK
OP-TLE35W ME+	AC220-240V AC110-277V	35W	Bridgelux	2450LM	Meat+	24, 38,60	Beef	WH/BK



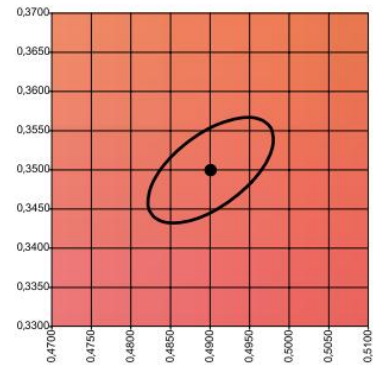
Colour stability:



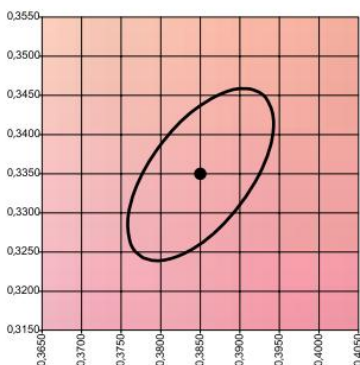
GOLD MacAdam ellipse: 3SDCM



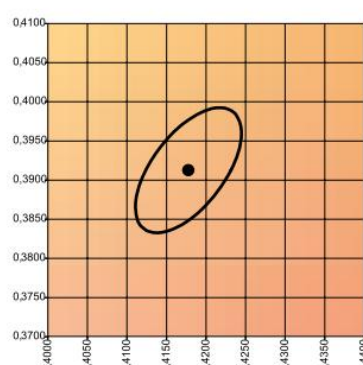
GOLD+ MacAdam ellipse: 4SDCM



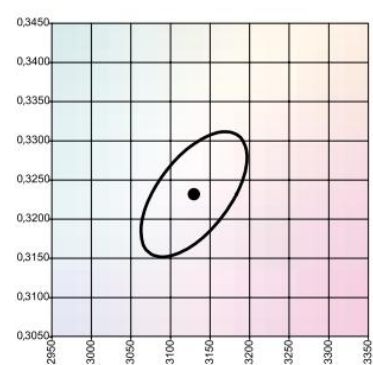
MEAT+ MacAdam ellipse: 3SDCM



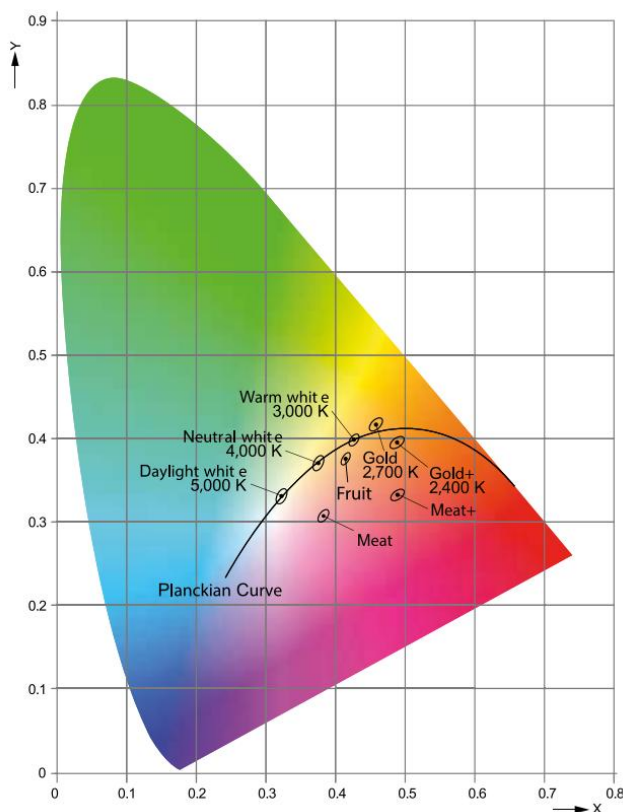
MEAT MacAdam ellipse: 4SDCM



FRUIT MacAdam ellipse: 3SDCM



FISH MacAdam ellipse: 3SDCM



Special Spectrum for different kinds of foods ,it is provided by quality module 3-4 SDCM, which means the light colour will not change over the LED operation.